



30% Design Community Meeting Westridge MS /Functional Equity Classroom Addition

March 20, 2023

Please sign in on your mobile device:
<https://communitymeeting.ocps.net/>



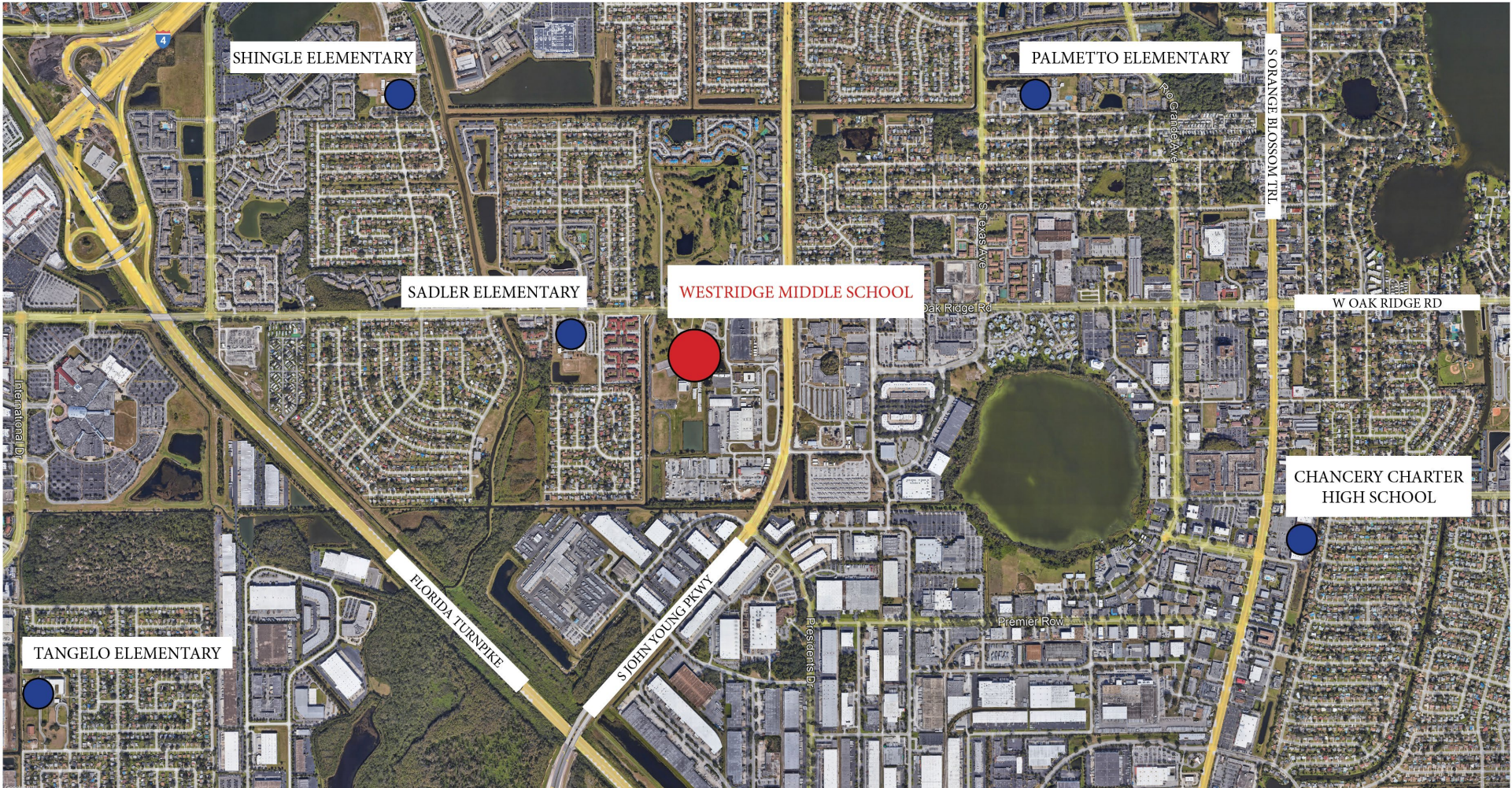
Welcome Message

From District 5 School Board Member

Vicki-Elaine Felder



Surrounding Context

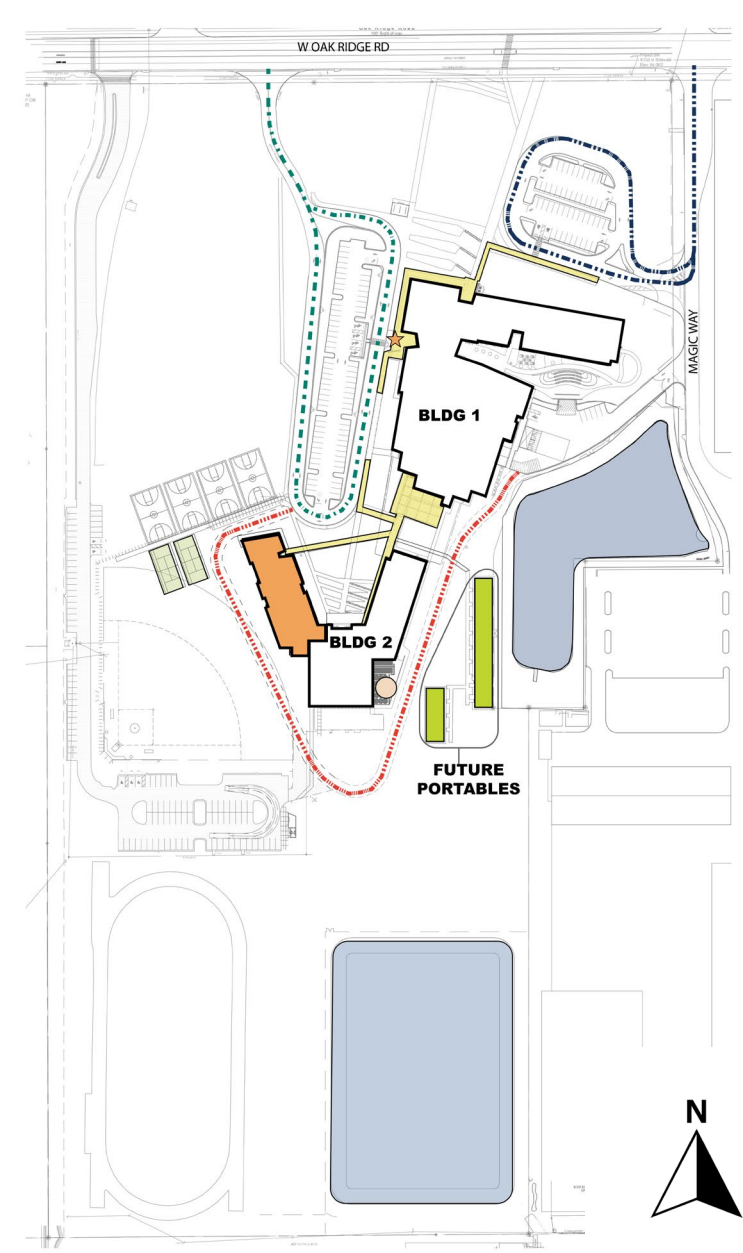
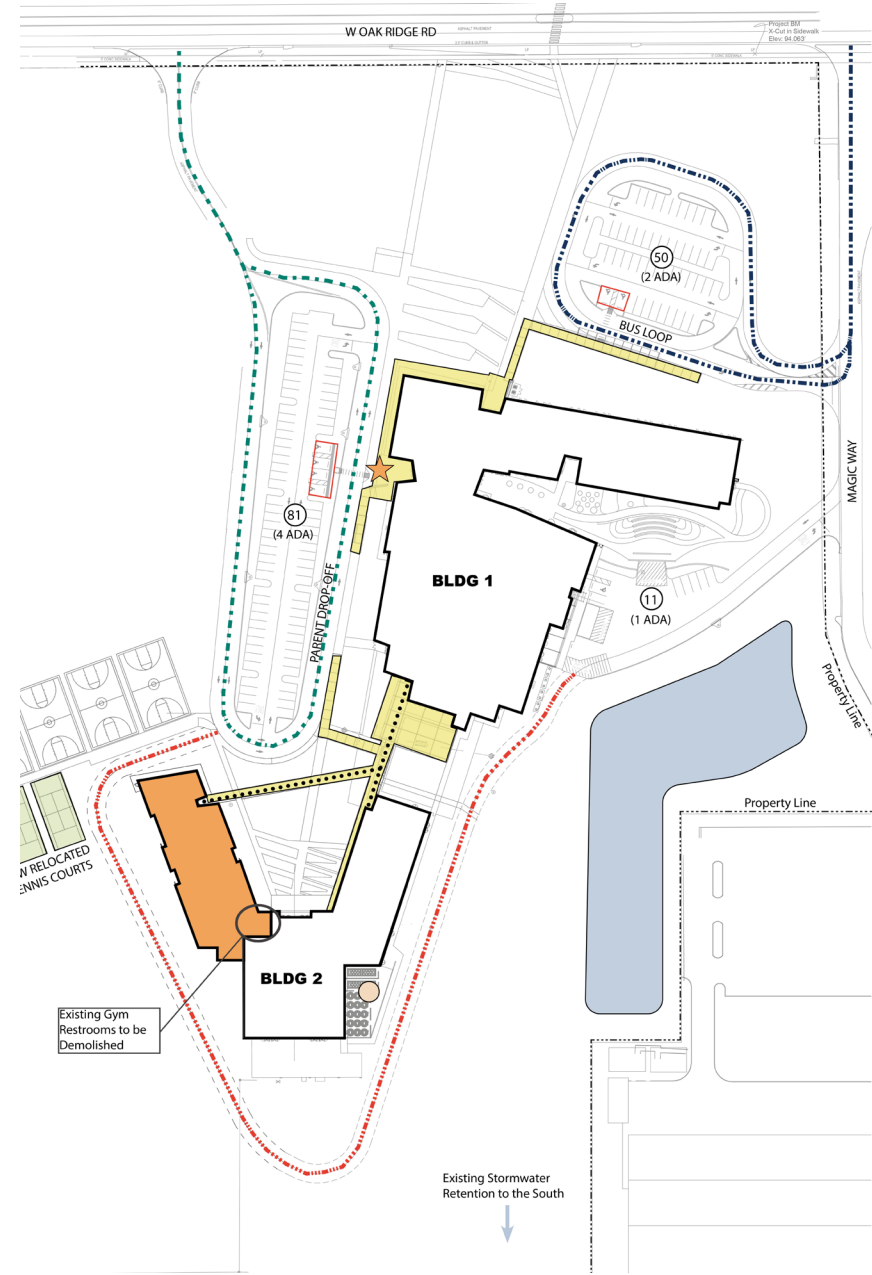


Site Plan

No. FLOORS: 1

LEGEND

- - - Parent Drop Off
- - - Bus Drop Off
- - - Fire Access Road
- New Addition
- Removed Covered Walkway
- New Covered Walkway
- New Sidewalk
- New PE Facilities
- Storm Water Retention
- CEP
- ★ Front Door
- ## Existing Parking



The Stats



ESTIMATE: \$6.6 MILLION



PROTOTYPE MIDDLE SCHOOL
STUDENT CAPACITY: 1215

Program Elements

The Functional Equity program, new classroom addition, includes:

- Classrooms
- ESE Rooms
- Resource Rooms
- Technology Lab
- Detention Room

The Capital Renewal program includes:

- Upgrading intercom and intrusion detection systems

Sustainability

Sustainable Design Criteria



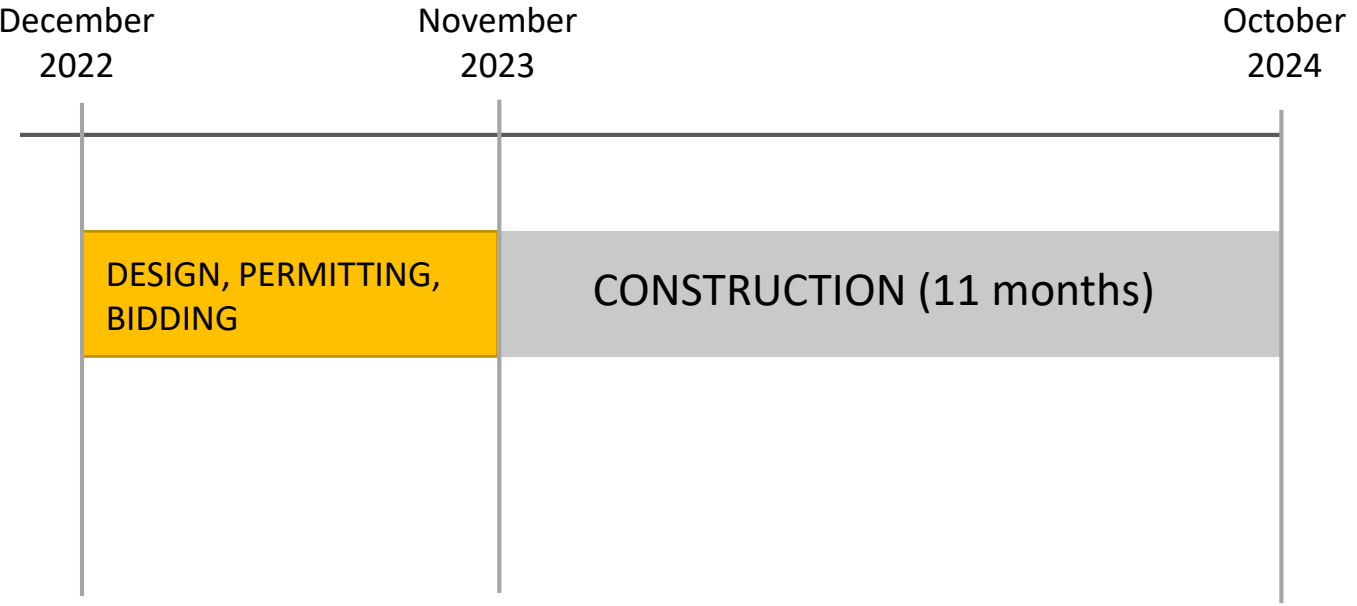
Building

- 10% more energy efficient than ASHRAE 90.1 standard
- Light colored roof to reduce heat gain and improves energy performance
- Energy Efficient LED Lighting
- Energy Star rated equipment
- Water saving toilets, faucets, and fixtures
- All classrooms have daylighting
- Over 75% of ALL spaces have daylighting
- Thermal efficient windows/glazing

Site

- Native/low water plants – reduce water consumption
- Low Impact Design (LID) stormwater design

Schedule



Thought Exchange

Thought Exchange

- OCPS is using a new tool called ThoughtExchange to gather input from students and staff and school community.
- Students, staff and parents are asked to answer one open-ended question with as many responses, and then moved onto the Rate Thoughts step.
- In the Rate step, they saw their responses and those shared by others and assigned 1 to 5 stars to each idea depending on how strongly they agreed or disagreed with it.

ThoughtExchange includes three steps:

1. **Share**: Respond to the question, independently and anonymously
2. **Star**: Consider thoughts shared and rate them on a five-star scale.
3. **Discover**: Learn what matters to the group by exploring thoughts and ratings.

Exchange Summary

Question:

Considering our plan for a classroom addition at your school, what is one thing about our plan that should be changed as we proceed with the design?

Questions & Answers

We want to hear from you.

Click here to give us your thoughts regarding your new school.

<https://tejoin.com/scroll/800222242>

This Community Meeting Presentation is posted
at facilities.ocps.net and on the School Board Member's page.

Our Promise. Your Support. Their Success.

Our Promise. Your Support. Their Success.

Our Promise. Your Support. Their Success.

Thank You

